



AQUATIC ANAESTHETIC

APPLICATIONS

Immediate release for field-based fisheries management activities
72 hrs for all other activities

BROODSTOCK MANAGEMENT
FISH MEASUREMENT AND TAGGING
FISH HUSBANDRY



BENEFITS

EFFECTIVE AT LOW CONCENTRATIONS
WIDE MARGIN OF SAFETY
FISH SHOW FAST RECOVERY
GENTLE AND HUMANE IN ACTION

AQUI-S® 20E is a water dispersible liquid anaesthetic for finfish. Currently AQUI-S® 20E is only sold in the USA under the Investigational New Aquaculture Drug (INAD) program. INAD 11-741.

Sedating fish with AQUI-S® 20E prior to and during a handling event will minimise physical activity by the animal, reduce the metabolic rate and mitigate the stress response by minimising the release of stress hormones. Consequently, fish have improved condition and survivability after handling.

APPLICATION

HANDLING - For practices where animals are being directly handled i.e. health and weight checks.



CONCENTRATION

75 - 150 mg/L AQUI-S® 20E
(equivalent to 7.5 - 15 mg/L Eugenol)

USE

AQUI-S® 20E can be mixed directly with treatment water to form the final concentration. Vigorous agitation will ensure uniform mixing.

PROPERTIES

APPEARANCE	Clear viscous liquid
ACTIVE INGREDIENT	Eugenol
ACTIVE INGREDIENT PROPORTION	10 %
SUITABLE ENVIRONMENT	Fresh and Saltwater



For more information please visit www.aqui-s.com

AQUI-S 20E

Effective anaesthetisation of aquatic animals is dependant upon the anaesthetic agent being rapidly and evenly dispersed throughout the water column. AQUI-S® 20E has been specifically formulated to achieve uniform mixing of the anaesthetic agent in the water with the formation of a very fine emulsion. Rapid and uniform mixing of AQUI-S® 20E within the water column can be best achieved by introducing the required volume in conjunction with agitation, i.e., aeration or physical agitation. This will form the anaesthetic working solution.

1: AQUI-S® 20E CONCENTRATION CALCULATION:

When the PRODUCT concentration is known: When the ACTIVE concentration is known:



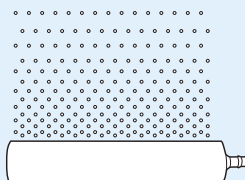
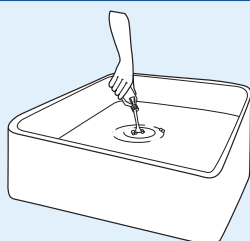
- Determine the required concentration of product AQUI-S® 20E:
e.g., 400 mg/L AQUI-S® 20E
- Determine volume of water in the bath: e.g., 25 gallons
Convert gal to L: 25 gal x 3.79 L = 94.75 L
- Calculate weight of AQUI-S® 20E required to achieve the desired concentration in the bath:
e.g., 400 mg/L x 94.75 L = 37,900 mg of AQUI-S® 20E
- Convert from mg to g:
e.g., 37,900 mg / 1,000 = 37.90 g AQUI-S® 20E
- To convert from g to mL divide by the specific gravity:
e.g., 37.90 g / 1.12 g/mL = 33.8 mL AQUI-S® 20E



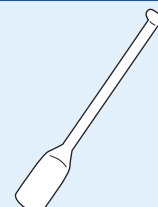
- Determine the required concentration of active EUGENOL:
e.g., 40 mg/L EUGENOL
- Determine volume of water in the bath: e.g., 25 gallons
Convert gal to L: 25 gal x 3.79 L = 94.75 L
- Calculate weight of EUGENOL required to achieve the desired concentration in the bath:
e.g., 40 mg/L x 94.75 L = 3,790 mg of EUGENOL
- Calculate weight of AQUI-S® 20E required to achieve the desired EUGENOL concentration in the bath:
e.g., 3,790 mg / 100 mg/g (active in AQUI-S® 20E) = 37.90 g
- To convert from g to mL divide by the specific gravity:
e.g., 37.90 g / 1.12 g/mL = 33.8 mL AQUI-S® 20E

NOTE: AQUI-S 20E is 10% active ingredient. AQUI-S 20E (Product) concentration is 10X the Eugenol (Active) concentration.

2 : PREPARATION OF THE WORKING SOLUTION



Use air diffuser or paddle to gently disperse the solution evenly into the anaesthetic bath.



NOTES

- Specific gravity of AQUI-S® 20E is 1.12 g/mL
- mg/L is the same as parts per million (ppm) and g/m³

ORDER DETAILS

Merck Animal Health USA
2000 Galloping Hill Road
Kenilworth, NJ 07033
Ph: +1 208-603-0336 | E: jacqueline.zimmerman@merck.com
Web: <https://www.merck-animal-health-usa.com>